



LARGEST STEEL MANUFACTURER IN INDIA

myAttendance Web Based Workforce Management Solution

Overview

At POSCO Maharashtra contract employees work in multiple shift timing and overtime working. To plan daily activities it is important for management and HR department to have real time data in front to take decisions. Every decision taken on right time is a cost saved for company.

Challenges

- Multiple Shifts Management
- Available workforce in real time
- Controlling Overtime
- Automated Integration with HRMS Solution
- Reducing duplication and manual work
- Manpower planning
- Old Attendance systems

Solution

- Multilevel Auto Shift implemented
- Daily automatic Calculations on Overtime
- Integration with HRMS Solution
- Auto Data Processing and Reporting
- Live Dashboard with Contactor wise headcount
- Latest Face Detection based attendance System

posco
MAHARASHTRA STEEL

Face Detection Attendance



CENTRALISED SOFTWARE

myBüro
Payroll & Attendance

DEVELOPED AND IMPLEMENTED BY

valisha
TECHNOLOGIES PVT. LTD.



CTO Review 20 Most Promising BIOMETRIC Solution Providers 2016 INDIA



Flap Barrier Entrance Solution

Challenge

POSCO is based on a large industrial set up and it consists of separate plants for different industrial operations. Hence, it was difficult for them to monitor employees at the entrance of each manufacturing plants, restricted areas as well as in other organizational premises. Furthermore, lack of protective measures at different organizational premises made them susceptible for external infiltration as well as unauthorized access by internal employees. To address the issues, POSCO administration required an entrance control solution to enforce protection across the industrial area.

ZKTeco



Solution

To provide enough protection in the major industrial areas, we offered dual model flap barrier-based entrance control system. (i.e.) FBL1000 & FBL1200 Flap Barriers. The FBL1000 model is a single lane flap barrier turnstile. Whereas, FBL1200 is a dual lane flap barrier turnstile which can work together with FBL1000 series to build multiple lanes offering cost-effective entrance control system designed for high-traffic volume. The smooth and silent operation of the system draws very little power.

The turnstiles are made of SUS304 stainless steel offering seamless long-term usage. The barriers are normally held in a locked position, thus denying access to the secured side. Upon displaying appropriate access card over RFID sensor, the arms of the barrier move sideward thus allowing users to the secured side. During emergencies the barriers automatically retract upward, thereby ensuring users unencumbered and rapid exit to safety.

DEVICE :

Flap Barrier with RFID

MODEL :

FBL1000 & FBL1200

USERS :

500+

APPLICATION :

Entrance Control Management

TECHNOLOGY :

RFID Technology

valisha[®]
TECHNOLOGIES PVT. LTD.

Technical Support : 020 40035807

E-mail : info@valishatech.com

www.valishatech.com



MJM Hospital, Pune

MYBURO CLOUD BASED PAYROLL SOLUTION

MJM HOSPITAL , PUNE

Overview :

A leading Multispecialty Hospital in Pune where we commit ourselves strongly to work with our patients in order to improve their lives daily, bringing them closer to leading a normal individual's life. Our strict protocols ensure our patients are at ease, giving them 'At home' feeling with specialized personal care, comfort, hygiene and state of the art technology.

Challenge :

- Over lapping Shift Times for Staff, Nurses & Doctors etc
- Online Leave Management
- Calculate accurate attendance from Face Detection system
- On time Salary Calculation every month
- Centralised Manpower Availability
- High Infrastructure Cost

SOLUTION PROVIDED

Face Detection based Attendance System



myBuro Cloud Solution



www.myburo.in





UGC Supply Chain Solutions

MYBURO CENTRALISED CLOUD BASED ATTENDANCE SOLUTION

UGC Supply Chain - PAN India

Overview :

A leading Supply Chain Solution Company in Chakan, Pune with Multiple Branch Offices provide complete Third Party Techno-Logistics services to the manufacturing industries

Challenges

- Multiple Location Attendance
- Multiple Shift at Multiple Location
- Workforce Availability in real time
- Controlling Overtime
- Attendance of Drivers
- Automated Integration with Payroll Solution
- Reducing manual work
- Manpower planning

Solution

- Multilevel Auto Shift implemented
- Realtime Centralised Attendance Reporting
- Branch wise Admin Logging for Better control
- Integration with Payroll Solution
- Auto Data Processing and Reporting
- Branch wise Live headcount
- Face Detection attendance System

SOLUTION PROVIDED

Face Detection based Attendance System



myBuro Cloud Solution



www.myburo.in





Amit Enterprises Housing Ltd

MYBURO CENTRALISED CLOUD BASED ATTENDANCE SOLUTION

Multiple Residential & Commercial Sites in Pune

Overview :

A leading Supply Chain Solution Company in Chakan, Pune with Multiple Branch Offices provide complete Third Party Techno-Logistics services to the manufacturing industries

Challenges

- Multiple Location Attendance
- Workforce Availability in real time
- Attendance of Drivers
- Automated Integration with ERP Payroll Solution
- Reducing manual work
- Manpower planning

Solution

- Multilevel Auto Shift implemented
- Realtime Centralised Attendance Reporting
- Integration with Payroll Solution
- Auto Data Processing and Reporting
- Branch wise Live headcount
- Face Detection attendance System

SOLUTION PROVIDED

Face Detection based Attendance System

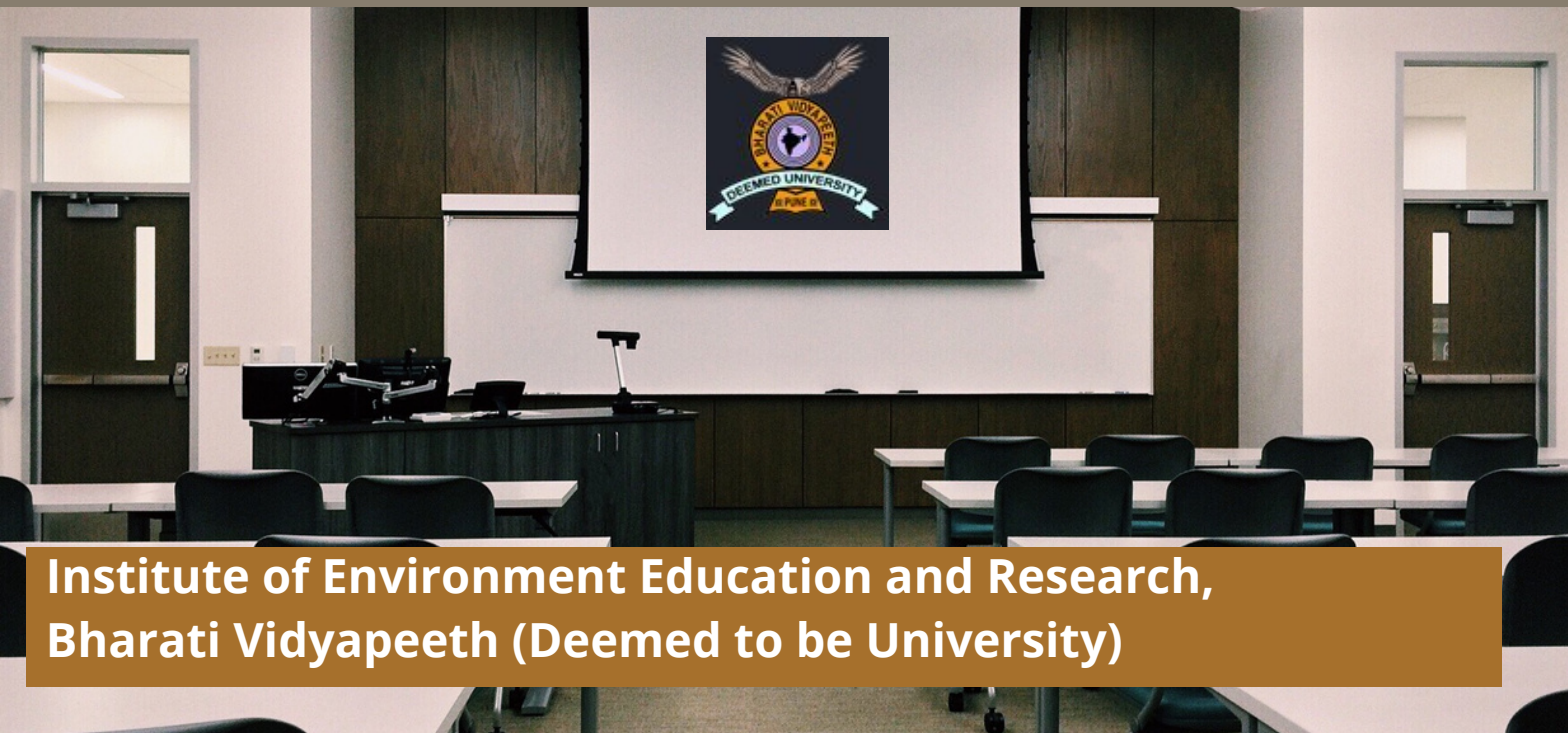


myBuro Cloud Solution



www.myburo.in





Institute of Environment Education and Research, Bharati Vidyapeeth (Deemed to be University)

MYBURO CLOUD BASED TIME ATTENDANCE SOLUTION

Overview :

The Institute of Environment Education and Research, Bharati Vidyapeeth (Deemed to be University) (BVIEER) is unique educational and research institution. The distinctive characteristics of the BVIEER are its wide mandate of teaching, research and extension which have been major thrusts of the Institute in the field of Environmental Science and Geoinformatics.

Challenges

- Field Staff Attendance
- Staff Availability in real time
- Attendance of Drivers
- Time consuming monthly reports process
- Reducing manual work

Solution

- Android Based Geo-Location Attendance
- Realtime Centralised Attendance
- Auto Data Processing and Reporting
- Live headcount
- Fingerprint + Card Based Attendance

SOLUTION PROVIDED

Fingerprint + Card Reader
Attendance System + Geo-
Location Android App



myBuro Cloud Solution



www.myburo.in





Alcove Co-Operative Hsg Society Pimple Saudagar

EYEMATIC IP CCTV SOLUTION

Overview :

Alcove Co-operative Housing Society is located at a prime area in Pune - Pimple Saudagar. A Society of 8 Towers divided in 2 parts, with Gym, Padium Garden, Amphitheater, Temple, Children Play area, Swimming Pool, Basement Parking and 2 side Entry and exit gates was not happy with the old installed CCTV camera's quality and service and required high resolution CCTV with 5 years warranty

Challanges

- Monitoring of parking area
- Monitoring in LIFT
- Keep Watch in Drive Way area
- Basement Parking Activity
- To prevent wrong activities in common area
- Children Safety within society

Solution

- 4 MP Project series IP Camera for Drive way
- 4 MP Lift Camera with Wide Angle
- 4 MP Dome Camera in Parking Area
- 64 Ch + 64 Ch NVR for Recording
- AI and Motion based CCTV Recording



SOLUTION PROVIDED

85 IP Based CCTV Security System



5

**YEARS
REPLACEMENT
WARRANTY**

10

**YEARS
SERVICE
ASSURANCE**





Jawaharlal Nehru Port Trust Navi Mumbai

EYEMATIC AI BASED IP CCTV SOLUTION



Overview :

Jawaharlal Nehru Port at Uran near Navi Mumbai is a largest PORT in India with thousands of containers movements in a day.

For all the containers there was no fixed place for waiting and parking near port. Containers use to stop at private parking which was leading to suspicious activities.

Challenges

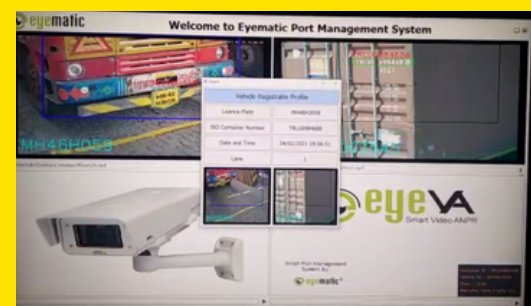
- Monitoring of parking area
- Monitoring of Container Entry
- Reading Hand Written Number Plates
- Reading Container Number
- Calculating container parking time
- Charging parking amount to transporters

Solution

- PTZ and Fixed camera installed on 15 poles
- AI Based ANPR solution to read even hand written number plates
- AI Based algorithm to recognize Container number in realtime
- Integration with Parking ticketing System
- Live Streaming at Command Center

SOLUTION PROVIDED

AI Based ANPR & Container
Number Detection



1

India's First
Smart
Container
Parking at
JNPT





Dream Plast India Pvt Ltd Baramati Plant

Overview :

Dream Plast India Pvt Ltd. Baramati Plant wanted to control activity of IN an Out of the employees along with the headcount for Emergency Evacuation.

Challenges

- Multiple Entry points
- Counting of employees manually
- Capturing Attendance at the same time
- Managing Workforce in multiple shifts
- Calculating Attendance

Solution

- Installed 5 Lane Flap Barrier along with 10 Face detection device
- On every In Punch Headcount is added with count and every out punch Headcount is reduced.
- Headcount display on 43" TV
- Multiple Shift settings in EasyTimePro Software
- User Face auto synchronisation

SOLUTION PROVIDED

Flap Barrier with AI Based Face Detection System and headcount solution

